



# UNIVERSITY VILLAGE

## HARPER | PLAN 1952

APPROX. 1,952 SQ. FT. | 2-STORY | 3 BEDROOMS | 2.5 BATHROOMS | 2-BAY GARAGE



**ELEVATION A**



**ELEVATION B**



**ELEVATION C**

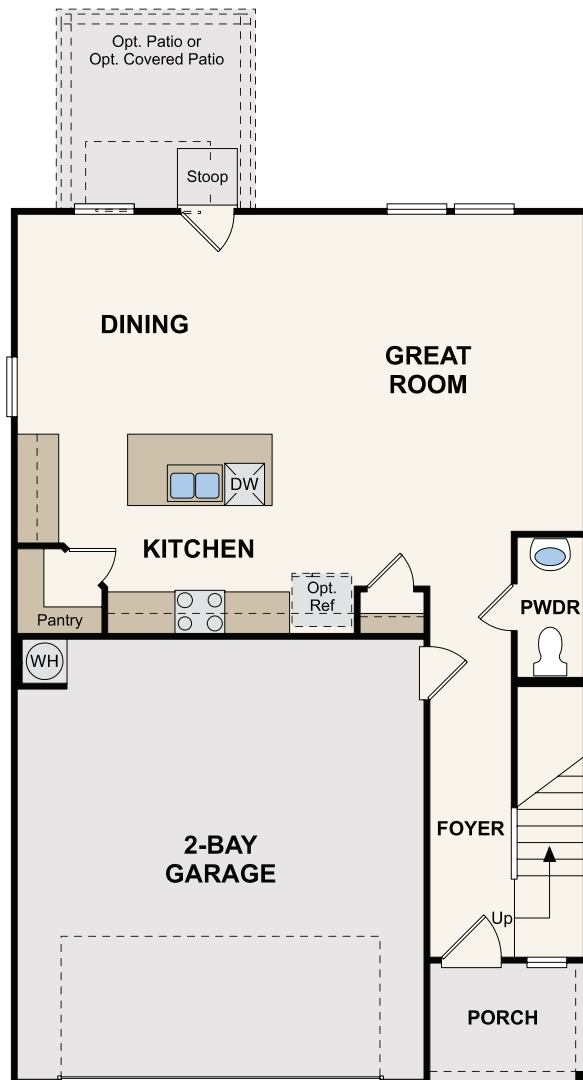


Prices, plans, and terms are effective on the date of publication and subject to change without notice. Square footage/acreage shown is only an estimate and actual square footage/acreage will differ. Buyer should rely on his or her own evaluation of usable area. Depictions of homes or other features are artist conceptions. Hardscape, landscape, and other items shown may be decorator suggestions that are not included in the purchase price and availability may vary. ©2023 Century Communities, Inc. Rev. 11/30/2023

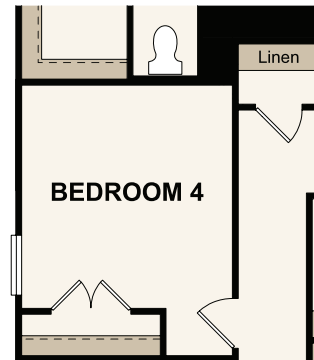


## HARPER | PLAN 1952

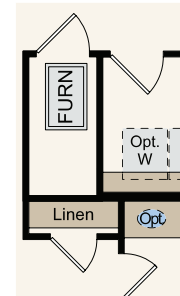
APPROX. 1,952 SQ. FT. | 2-STORY | 3 BEDROOMS | 2.5 BATHROOMS | 2-BAY GARAGE



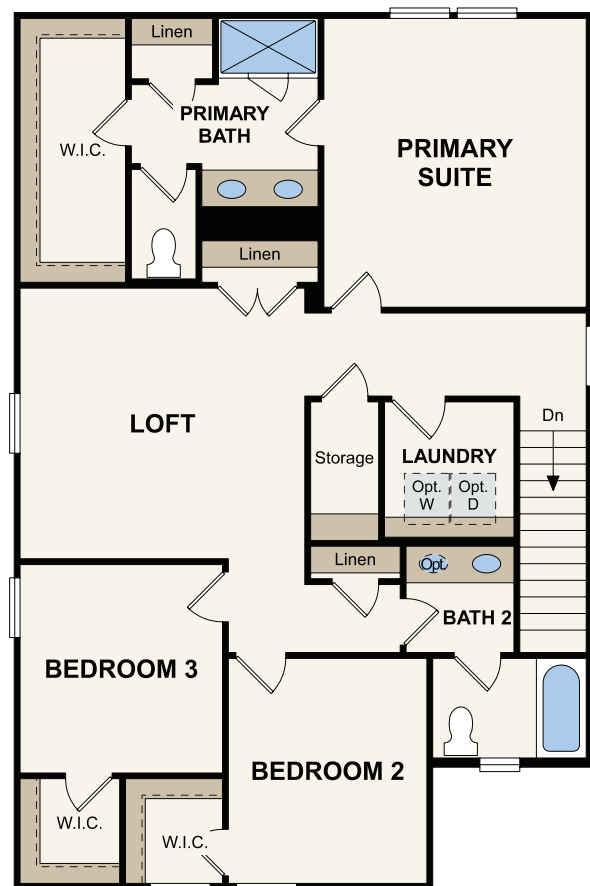
**FIRST FLOOR**



**OPT. BEDROOM 4  
ILO LOFT**



**OPT. FAU CLOSET**



**SECOND FLOOR**



Prices, plans, and terms are effective on the date of publication and subject to change without notice. Square footage/acreage shown is only an estimate and actual square footage/acreage will differ. Buyer should rely on his or her own evaluation of usable area. Depictions of homes or other features are artist conceptions. Hardscape, landscape, and other items shown may be decorator suggestions that are not included in the purchase price and availability may vary. ©2023 Century Communities, Inc. Rev. 11/30/2023